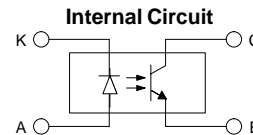
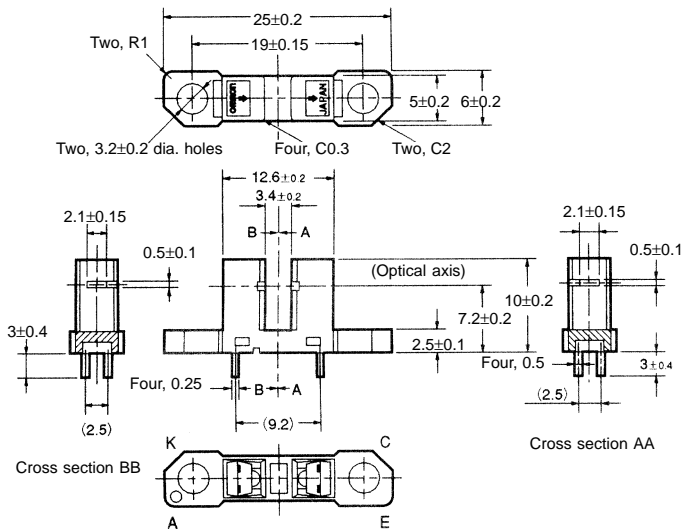


### Transmissive

- General-purpose model with a 3.4-mm-wide slot.
- Mounts to PCBs or to connectors.
- High resolution with a 0.5-mm-wide aperture.
- Incorporating a horizontal sensing aperture.
- OMRON's XK8-series Connectors can be connected without soldering. Contact OMRON for information on obtaining XK8-series Connectors.



### Dimensions



Terminal No.	Name
A	Anode
K	Cathode
C	Collector
E	Emitter

Unless otherwise specified, the tolerances are as shown below.

Dimensions	Tolerance
3 mm max.	$\pm 0.3$
$3 < \text{mm} \leq 6$	$\pm 0.375$
$6 < \text{mm} \leq 10$	$\pm 0.45$
$10 < \text{mm} \leq 18$	$\pm 0.55$
$18 < \text{mm} \leq 30$	$\pm 0.65$

### Specifications

#### Absolute Maximum Ratings ( $T_a = 25^\circ\text{C}$ )

Item	Symbol	Rated value	
Emitter	Forward current	$I_F$	50 mA (see note 1)
	Pulse forward current	$I_{FP}$	1 A (see note 2)
	Reverse voltage	$V_R$	4 V
Detector	Collector-Emitter voltage	$V_{CEO}$	30 V
	Emitter-Collector voltage	$V_{ECO}$	---
	Collector current	$I_C$	20 mA
	Collector dissipation	$P_C$	100 mW (see note 1)
Ambient temperature	Operating	$T_{opr}$	$-25^\circ\text{C}$ to $85^\circ\text{C}$
	Storage	$T_{stg}$	$-30^\circ\text{C}$ to $100^\circ\text{C}$
	Soldering	$T_{sol}$	$260^\circ\text{C}$

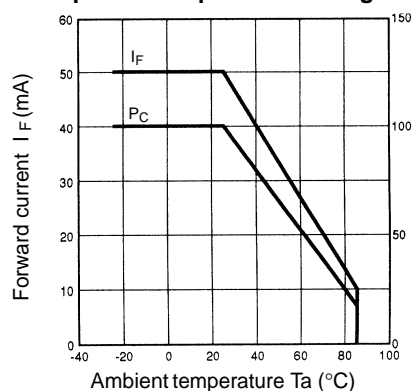
- Note:**
1. Refer to the temperature rating chart if the ambient temperature exceeds  $25^\circ\text{C}$ .
  2. The pulse width is  $10 \mu\text{s}$  maximum with a frequency of 100 Hz.

## ■ Electrical and Optical Characteristics (Ta = 25°C)

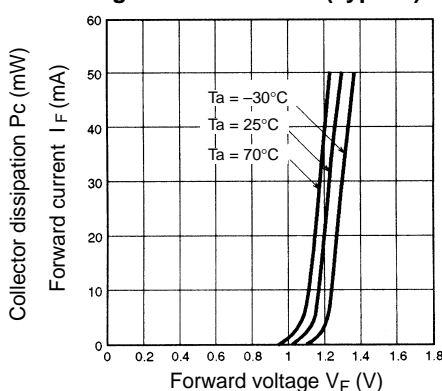
Item		Symbol	Value	Condition
Emitter	Forward voltage	$V_F$	1.2 V typ., 1.5 V max.	$I_F = 30$ mA
	Reverse current	$I_R$	0.01 $\mu$ A typ., 10 $\mu$ A max.	$V_R = 4$ V
	Peak emission wavelength	$\lambda_P$	940 nm typ.	$I_F = 20$ mA
Detector	Light current	$I_L$	0.5 mA min., 14 mA max.	$I_F = 20$ mA, $V_{CE} = 10$ V
	Dark current	$I_D$	2 nA typ., 200 nA max.	$V_{CE} = 10$ V, 0 lx
	Leakage current	$I_{LEAK}$	---	---
	Collector–Emitter saturated voltage	$V_{CE(sat)}$	0.1 V typ., 0.4 V max.	$I_F = 20$ mA, $I_L = 0.1$ mA
	Peak spectral sensitivity wavelength	$\lambda_P$	850 nm typ.	$V_{CE} = 10$ V
Rising time		$t_r$	4 $\mu$ s typ.	$V_{CC} = 5$ V, $R_L = 100 \Omega$ , $I_L = 5$ mA
Falling time		$t_f$	4 $\mu$ s typ.	$V_{CC} = 5$ V, $R_L = 100 \Omega$ , $I_L = 5$ mA

## Engineering Data

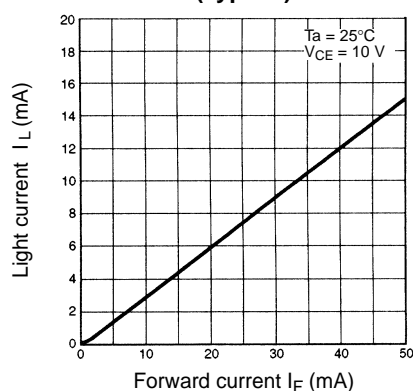
**Forward Current vs. Collector Dissipation Temperature Rating**



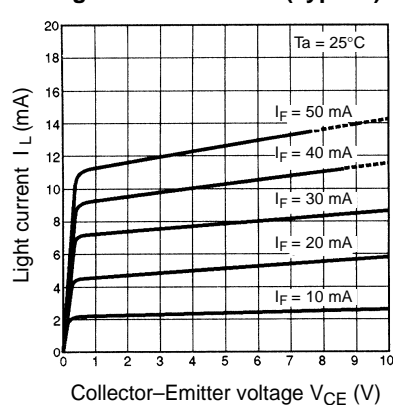
**Forward Current vs. Forward Voltage Characteristics (Typical)**



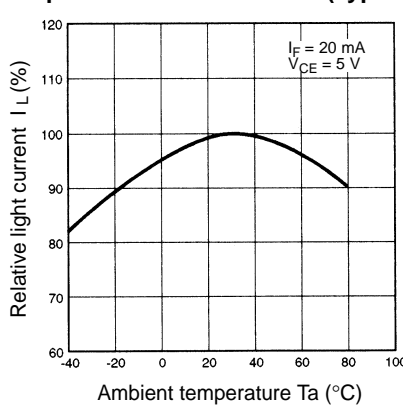
**Light Current vs. Forward Current Characteristics (Typical)**



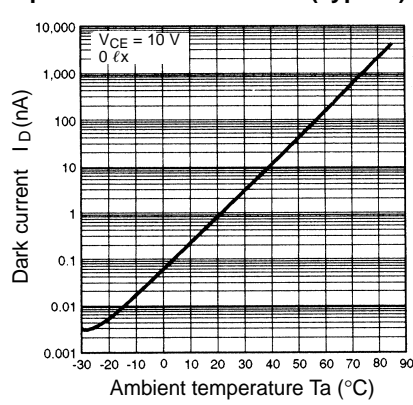
**Light Current vs. Collector–Emitter Voltage Characteristics (Typical)**



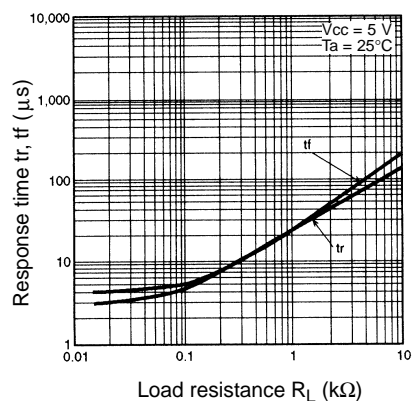
**Relative Light Current vs. Ambient Temperature Characteristics (Typical)**



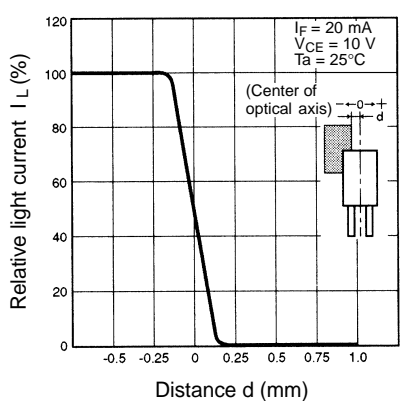
**Dark Current vs. Ambient Temperature Characteristics (Typical)**



**Response Time vs. Load Resistance Characteristics (Typical)**



**Sensing Position Characteristics (Typical)**



**Response Time Measurement Circuit**

